

# New Stanton Volunteer Fire Department

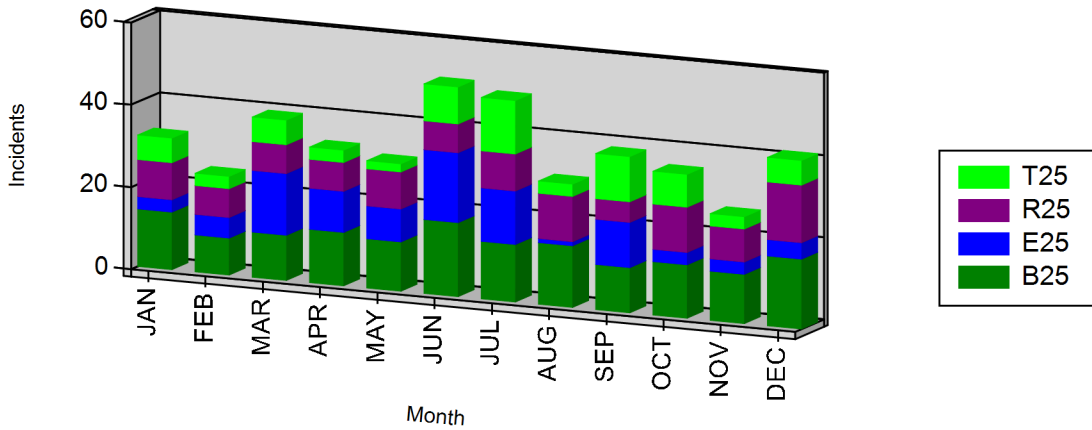
New Stanton, PA

This report was generated on 01/01/2019



## Incidents per Apparatus by Month for Year

Year: 2017



| APPARATUS    | JAN       | FEB       | MAR       | APR       | MAY       | JUN       | JUL       | AUG       | SEP       | OCT       | NOV       | DEC       | TOTAL      |
|--------------|-----------|-----------|-----------|-----------|-----------|-----------|-----------|-----------|-----------|-----------|-----------|-----------|------------|
| B25          | 14        | 9         | 11        | 13        | 12        | 18        | 14        | 15        | 11        | 13        | 12        | 17        | 159        |
| E25          | 3         | 5         | 15        | 10        | 8         | 17        | 13        | 1         | 11        | 3         | 3         | 4         | 93         |
| R25          | 9         | 7         | 7         | 7         | 9         | 7         | 9         | 11        | 5         | 11        | 8         | 14        | 104        |
| T25          | 6         | 3         | 6         | 3         | 2         | 9         | 13        | 3         | 11        | 8         | 3         | 6         | 73         |
| <b>Total</b> | <b>32</b> | <b>24</b> | <b>39</b> | <b>33</b> | <b>31</b> | <b>51</b> | <b>49</b> | <b>30</b> | <b>38</b> | <b>35</b> | <b>26</b> | <b>41</b> | <b>429</b> |

Cancelled apparatus (per the THIS APPARATUS WAS CANCELLED checkbox on Basic Info 4) not included. Only REVIEWED incidents included.