

New Stanton Volunteer Fire Department

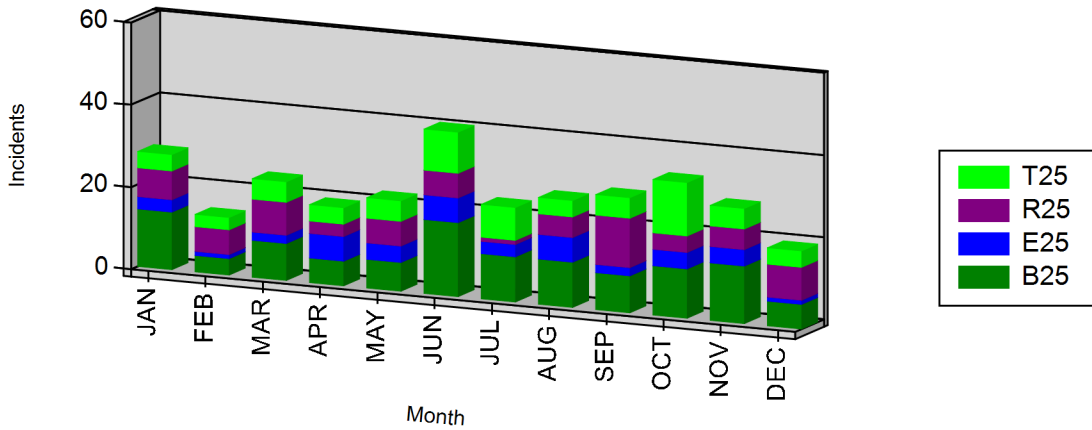
New Stanton, PA

This report was generated on 01/01/2019



Incidents per Apparatus by Month for Year

Year: 2018



APPARATUS	JAN	FEB	MAR	APR	MAY	JUN	JUL	AUG	SEP	OCT	NOV	DEC	TOTAL
B25	14	4	9	6	7	18	11	11	9	12	14	6	121
E25	3	1	2	6	4	6	3	6	2	4	4	1	42
R25	7	6	8	3	6	6	1	5	12	4	5	8	71
T25	4	3	5	4	5	10	8	4	5	13	5	4	70
Total	28	14	24	19	22	40	23	26	28	33	28	19	304

Canceled apparatus (per the THIS APPARATUS WAS CANCELLED checkbox on Basic Info 4) not included. Only REVIEWED incidents included.

